

Discover What's Possible™

Anritsu



**MD1230A-04 MD1230A Decode Module**  
**MD1231A-04 MD1231A Decode Module**  
**MX123002A MD1230A Expert Analysis Module**

**MX123001A-01 Remote Control Software for MD1230A-04**

**MX123003A Remote Control Software for MX123002A**

**(For MD1230A Data Quality Analyzer/  
MD1231A IP Network Analyzer)**

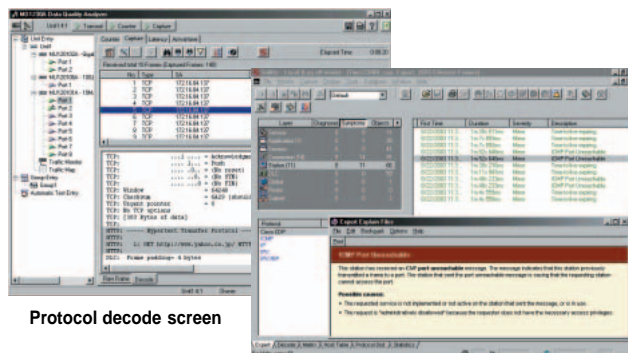


**Network Analysis Powered by Sniffer® Technologies**

## Powered by Sniffer® Technologies

As network technologies evolve and become more complicated, network analysis and fault detection become ever more important. To help network professionals build, operate, and maintain their data networks, Anritsu offers Network Associates' industry-leading network fault analysis software, Sniffer® Technologies, for the MD1230A and MD1231A. With Sniffer® Technologies and the MD1230A/1231A, you can now more than ever reduce network downtime and ensure network availability.

\* Anritsu is licensing Sniffer® Technologies from Network Associates Inc. for use with the Anritsu MD1230A /1231A.



Protocol decode screen

Expert network analysis screen

## MD1230A-04: MD1230A Decode Module MD1231A-04: MD1231A Decode Module

When the MD1230A/1231A Decode Module is installed on the MD1230A/1231A, the protocol decode function of the MD1230A/1231A is extended to support nearly 400 protocol decodes.

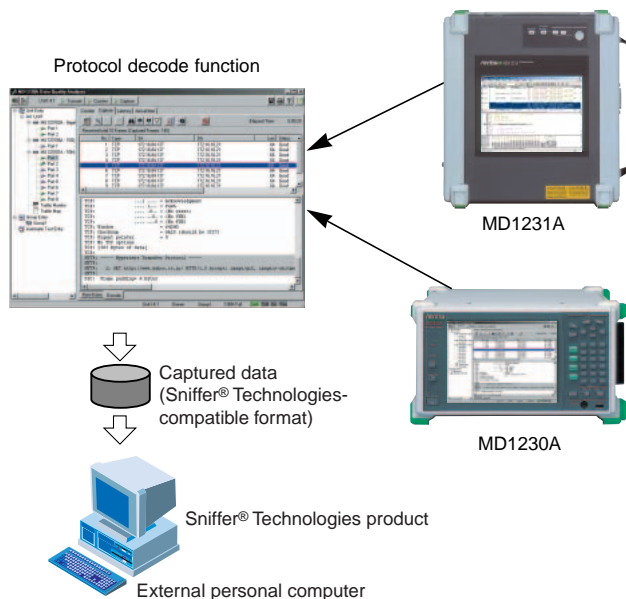
\* The protocol decode function is applied to the MD1230A/1231A's captured data.

### ● Protocol decode function

The protocol decode function decodes nearly 400 protocols on almost every LAN and WAN network topology. The protocols supported include Cisco protocols such as CDP, DISL, DRiP, VTP, ISL, PAGP, and CGMP, and VoIP protocols such as H.225 protocol, H.245 protocol, MGCP, and SIP. The function decodes on all seven layers of the OSI reference model, providing complete protocol decode analysis of any network.

### ● Save captured data to a Sniffer® Technologies-compatible format

The MD1230A/1231A Decode Module saves captured traffic to the industry-standard CAP format so that the files can be read by almost any protocol analyzer.



Functions of the MD1230A/1231A Decode Module

## MX123002A : MD1230A Expert Analysis Module

When the MD1230A Expert Analysis Module is used in conjunction with the MD1230A/1231A Decode Module, both the protocol decode and network analysis functions of Sniffer® Technologies are available.

\* The protocol decode and network analysis functions are applied to the MD1230A/1231A's captured data.

### ● Protocol decode function

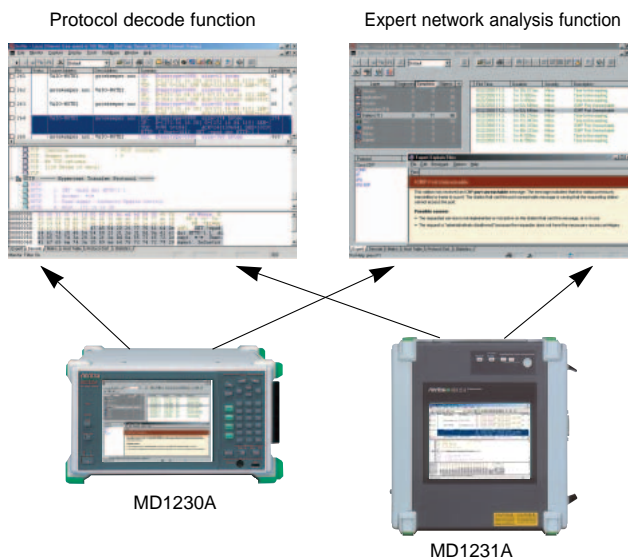
Like the protocol decode function of the MD1230A/1231A Decode Module, the protocol decode function of the MD1230A Expert Analysis Module can decode nearly 400 protocols.

### ● Expert network analysis function

The expert network analysis function automatically detects faults and faulty symptoms in networks and network equipment and provides detailed troubleshooting information. Faults are classified and organized as a "Diagnosis" or a "Symptom". The user is presented with an easy-to-understand Expert Screen user interface from which he can review fault messages and recommended corrective actions.

### ● Look and feel of Sniffer® Technologies software

The Expert Analysis Module is an OEM version of Network Associates' Sniffer® Portable 4.7 and Sniffer® Voice 2.1 software (English version). It has all of the functions and features of both products.

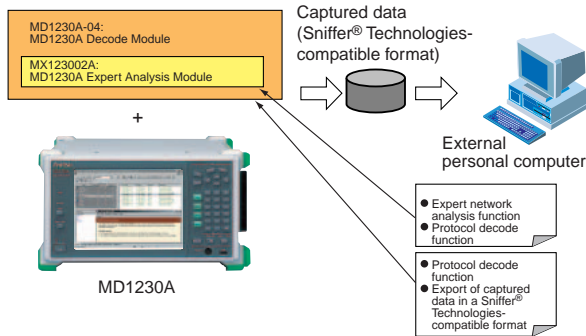


Functions of the MD1230A Expert Analysis Module

## Configuration

### Standalone configuration

The MD1230A/1231A Decode Module can be used with the MD1230A and MD1231A by installing MD1230A-04/1231A-04. The MD1230A Expert Analysis Module can be used with the MD1230A/1231A by installing both MD1230A-04, MD1231A-04 and MX123002A.

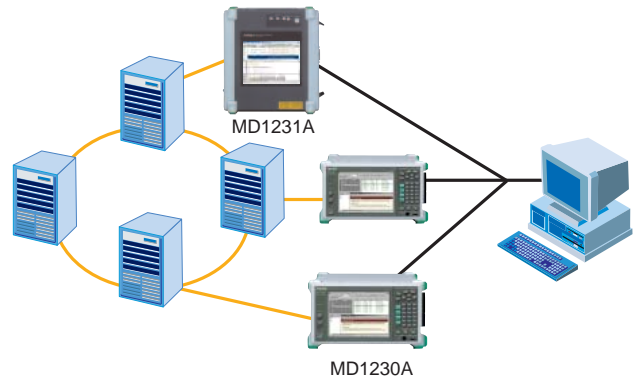


Standalone type configuration

## Remote Control Feature

By installing MX123001A-01: Remote Control Software for MD1230A-04 and MX123003A: Remote Control Software for MD123002A on a personal computer (PC), you can access and control any MD1230A\*. Any function and feature that is available on the MD1230A is made available to the PC. This makes it possible for network professionals to carry out network analysis from remote locations.

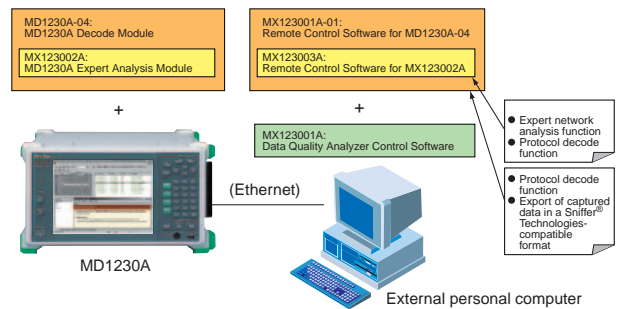
\*: The MD1230A that is accessed and controlled remotely must have MD1230A-04 and/or MX123002A installed.



Network fault analysis by distributed remote control

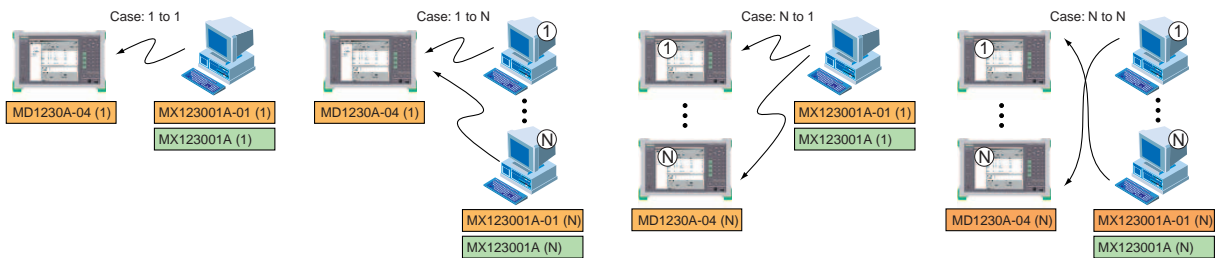
### Remote control configuration

An MD1230A/1231A with the MD1230A/1231A Decode Module installed can be controlled remotely by a PC if the MX123001A-01: Remote Control Software for MD1230A-04/1231A-04 is installed on the PC. An MD1230A/1231A with MD1230A-04/1231A-04 and MX123002A can be controlled remotely from a PC that has MX123001A-01 and MX123003A: Remote Control Software for MX123002A installed. In both cases, MX123001A: Data Quality Analyzer Control Software must be already installed on the PC.

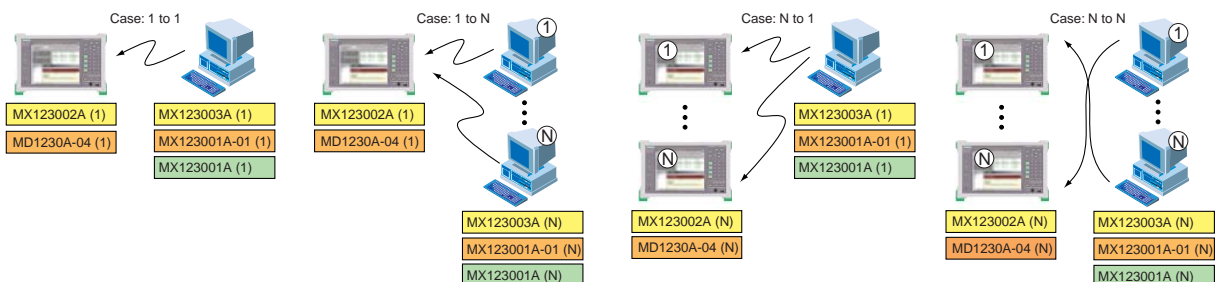


Remote-control type configuration

\* The user must obtain a software license for each MD1230A/1231A and each PC. The number of license (s) required is shown in parenthesis.



License requirement for remote-control type (MD1230A/1231A Decode Module)



License requirement for remote-control type (MD1230A Expert Analysis Module)



# Specifications

	<b>MD1230A-04</b> MD1230A Decode Module	<b>MD1231A-04</b> MD1231A Decode Module	<b>MX123002A</b> MD1230A Expert Analysis Module	<b>MX123001A-01</b> Remote Control Software for MD1230A-04	<b>MX123003A</b> Remote Control Software for MX123002A
Software version	Sniffer® Portable 4.7 and Sniffer® Voice 2.1 Decode Engines		Sniffer® Portable 4.7, Sniffer® Voice 2.1	Sniffer® Portable 4.7 and Sniffer® Voice 2.1 Decode Engines	Sniffer® Portable 4.7, Sniffer® Voice 2.1
Protocols	Nearly 400 Decodes*1 Data Link Control, IPv6, TCP/IP, RSVP, LDP, MPLS, Cisco, CORBA, Microsoft®, Apple, Banyan, Novell, Digital DEC, ISO, NFS, Xerox, WAN, Oracle DBMS, SYBASE DBMS, X-Windows, VoIP				
Expert analysis	No		Yes	No	Yes
Operating environment	MD1230A	MD1231A	MD1230A MD1231A	Personal computer OS: Windows® 98 (SE), Windows® 2000 (SP2), CPU: Pentium® 450 MHz or higher, Memory: 128 MB or more, Hard disk space: 80 MB or more, Display resolution: SVGA 800 x 600 or more	

\*1: For details on the protocols that are supported, please contact your Anritsu sales representative.

## Ordering Information

Please specify model/order number, name, and quantity when ordering.

Model/Order No.	Name
	<b>Options</b>
MD1230A-04	MD1230A Decode Module
MD1231A-04	MD1231A Decode Module
	<b>Software</b>
MX123001A	Data Quality Analyzer Control Software
MX123001A-05	Data Quality Analyzer Control Software (5 licenses)
MX123001A-08	Data Quality Analyzer Control Software (8 licenses)
MX123001A-01	Remote Control Software for MD1230A-04*2
MX123001A-15	Remote Control Software for MD1230A-04 (5 licenses)*2
MX123001A-18	Remote Control Software for MD1230A-04 (8 licenses)*2
MX123002A	MD1230A Expert Analysis Module*3
MX123003A	Remote Control Software for MX123002A*4
MX123003A-05	Remote Control Software for MX123002A (5 licenses)*4
MX123003A-08	Remote Control Software for MX123002A (8 licenses)*4
	<b>Maintenance service</b>
MD1230A-41	Annual Software Maintenance for MD1230A-04*5
MD1230A-42	Annual Software Maintenance for MX123002A*5
MD1231A-41	Annual Software Maintenance for MD1231A-04*5
MD1231A-42	Annual Software Maintenance for MX123002A*5
	<b>Optional accessories</b>
W2107AE	MD1230A-04 MD1230A Decode Module, MX123001A-01 Remote Control Software for MD1230A-04 Operation Manual
W2108AE	MX123002A Expert Analysis Module, MX123003A Remote Control Software for MX123002A Operation Manual

- \*2: MD1230A is required MX123001A-05/-08 Data Quality Analyzer Control Software and MD1230A-04 MD1230A Decode Module. MD1231A is required MX123001A-05/-08 Data Quality Analyzer Control Software and MD1231A-04 MD1231A Decode Module.
- \*3: MD1230A is required MD1230A-04 MD1230A Decode Module. MD1231A is required MD1231A-04 MD1231A Decode Module.
- \*4: MD1230A is required MX123001A-05/-08 Data Quality Analyzer Control Software, MX123001A-01/-15/-18 Remote Control Software for MD1230A-04, and MD1230A-04 MD1230A Decode Module. MD1231A is required MX123001A-05/-08 Data Quality Analyzer Control Software, MX123001A-01/-15/-18 Remote Control Software for MD1230A-04, and MD1231A-04 MD1231A Decode Module.
- \*5: Users with a software maintenance agreement can upgrade the MD1230A-04 or MX123002A function free of charge for one year. For more information, please contact your Anritsu sales representative.

Microsoft®, Windows®, Windows NT® are registered trademarks of Microsoft Corporation of the US in the United States and other countries. Pentium® is a registered trademark of Intel Corporation. Sniffer®, logo of Network Associates, and Network Associates are registered trademarks of Network Associates, Inc. and/or its affiliates in the US and/or other countries. All other registered and unregistered trademarks in this document are the sole property of their respective owners.



Specifications are subject to change without notice.

### ANRITSU CORPORATION

1800 Onna, Atsugi-shi, Kanagawa, 243-8555 Japan  
Phone: +81-46-223-1111  
Fax: +81-46-296-1264

#### • U.S.A.

#### ANRITSU COMPANY

**North American Region Headquarters**  
1155 East Collins Blvd., Richardson, TX 75081, U.S.A.  
Toll Free: 1-800-ANRITSU (267-4878)  
Phone: +1-972-644-1777  
Fax: +1-972-671-1877

#### • Canada

#### ANRITSU ELECTRONICS LTD.

700 Silver Seven Road, Suite 120, Kanata,  
ON K2V 1C3, Canada  
Phone: +1-613-591-2003  
Fax: +1-613-591-1006

#### • Brasil

#### ANRITSU ELETRÔNICA LTDA.

Praca Amadeu Amaral, 27 - 1 andar  
01327-010 - Paraisópolis, São Paulo, Brazil  
Phone: +55-11-2283-2511  
Fax: +55-21-2886940

#### • U.K.

#### ANRITSU LTD.

200 Capability Green, Luton, Bedfordshire LU1 3LU, U.K.  
Phone: +44-1582-433280  
Fax: +44-1582-731303

#### • Germany

#### ANRITSU GmbH

Grafenberger Allee 54-56, 40237 Düsseldorf, Germany  
Phone: +49-211-96855-0  
Fax: +49-211-96855-55

#### • France

#### ANRITSU S.A.

9, Avenue du Québec Z.A. de Courtbaëuf 91951 Les  
Ulis Cedex, France  
Phone: +33-1-60-92-15-50  
Fax: +33-1-64-46-10-65

#### • Italy

#### ANRITSU S.p.A.

Via Elio Vittorini, 129, 00144 Roma EUR, Italy  
Phone: +39-06-509-9711  
Fax: +39-06-502-24-25

#### • Sweden

#### ANRITSU AB

Botvid Center, Fittja Backe 1-3 145 84 Stockholm,  
Sweden  
Phone: +46-853470700  
Fax: +46-853470730

#### • Singapore

#### ANRITSU PTE LTD.

10, Hoe Chiang Road #07-01/02, Keppel Towers,  
Singapore 089315  
Phone: +65-6282-2400  
Fax: +65-6282-2533

#### • Hong Kong

#### ANRITSU COMPANY LTD.

Suite 923, 9/F., Chinachem Golden Plaza, 77 Mody  
Road, Tsimshatsui East, Kowloon, Hong Kong, China  
Phone: +852-2301-4980  
Fax: +852-2301-3545

#### • P. R. China

#### ANRITSU COMPANY LTD.

#### Beijing Representative Office

Room 1515, Beijing Fortune Building, No. 5 North  
Road, the East 3rd Ring Road, Chao-Yang District  
Beijing 100004, P.R. China  
Phone: +86-10-6590-9230

#### • Korea

#### ANRITSU CORPORATION

8F Hyun Juk Bldg. 832-41, Yeoksam-dong,  
Kangnam-ku, Seoul, 135-080, Korea  
Phone: +82-2-553-6603  
Fax: +82-2-553-6604~5

#### • Australia

#### ANRITSU PTY LTD.

Unit 3/170 Forster Road Mt. Waverley, Victoria, 3149,  
Australia  
Phone: +61-3-9558-8177  
Fax: +61-3-9558-8255

#### • Taiwan

#### ANRITSU COMPANY INC.

7F, No. 316, Sec. 1, NeiHu Rd., Taipei, Taiwan  
Phone: +886-2-8751-1816  
Fax: +886-2-8751-1817

030617